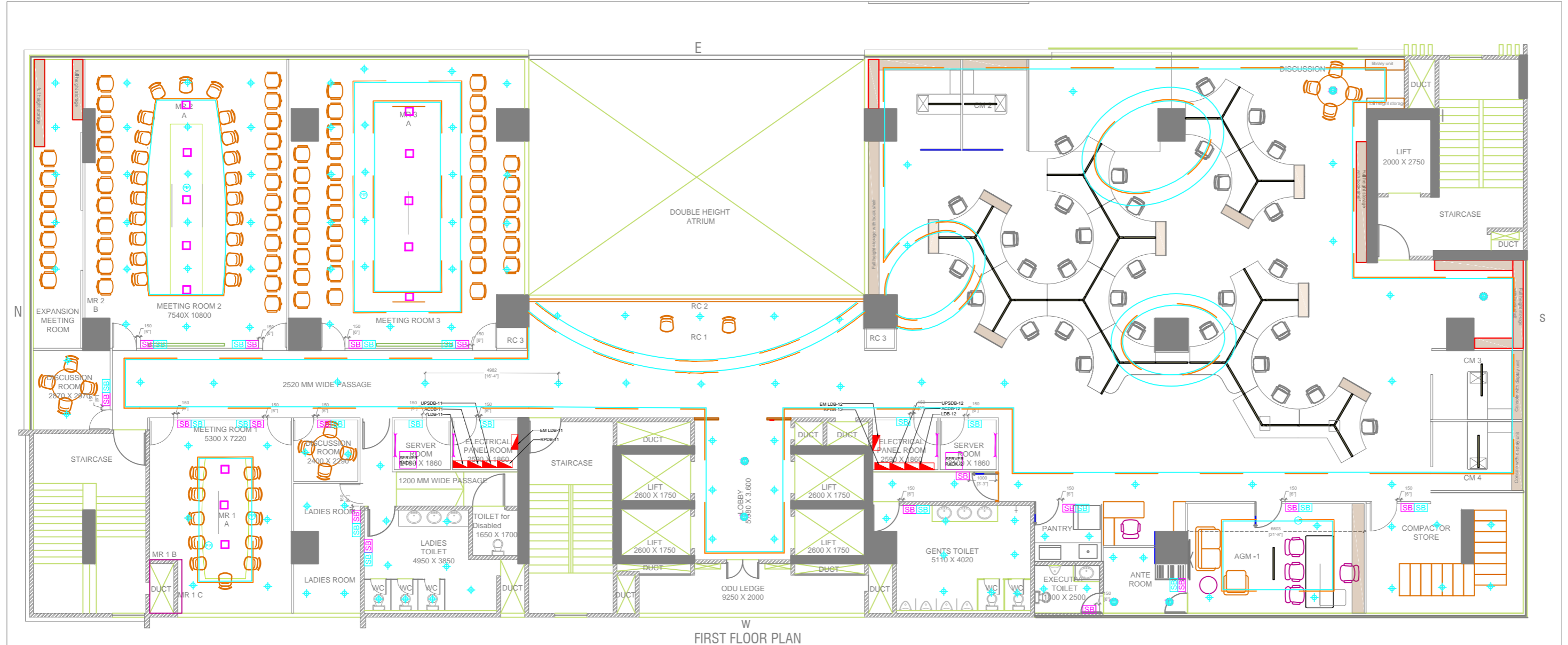


# TENDER DRAWING



FIRST FLOOR PLAN

**LEGEND FOR ELECTRICAL:**

	SWITCH BOARD WITH 6A SOCKET
	EM SWITCH BOARD
	LIGHT CONTROL(NORMAL)
	LIGHT CONTROL (EMERGENCY)
	LIGHT CIRCUITING(NORMAL)
	LIGHT CIRCUITING(EMERGENCY)
	DISTRIBUTION BOARDS
	PIR SENSOR

NOTE:  
INCUBICLE SWITCHBOARDS NOT CONSIDERED, AS IT WILL BE CONTROLLED FROM COMMON SWITCHBOARDS/MCS.

**LEGEND FOR LED LIGHTS**

NO.	SYMBOL	DESCRIPTION	QTY	IMAGE
1		15W SUSPENDED LUMINAIRE CAT NO. WIPRO-LM43-241DALI 140 UGWC	-	
2		20W SUSPENDED LUMINAIRE CAT. NO. - WIPRO-LM43-321DALI 140 UGWC	-	
3		12W DOWNLIGHTER (CAT NO. WIPRO-LD06-151 xx40 xx)	-	
4		33W RECESSED 2'X2' LUMINAIRE 6500K (CAT. NO. WIPRO-LM9-451DALI -40 xx)	-	
5		33W RECESSED MOUNDED LED LUMINAIRE (CAT NO. WIPRO: LM230R-621-0440-WV)	-	
6		33W RECESSED LED 2'X2' LUMINAIRES 6500K CAT NO. WIPRO:CRCC 16R038P4934 IMMACULATE NXG)	-	
7		15W Y SHAPE AXIION+ ANGULAR SUSPENDED LUMINAIRE (CAT NO. WIPRO-LM34-141120-Y40WC2)	-	
8		15W ANGULAR SUSPENDED LUMINAIRE (CAT NO. - WIPRO: LM34-930-90-40WC2)	-	
9		20W, 4FT TUBELIGHT LINEAR BATTEN	-	
10		LED STRIP - COVE LIGHTS	-	

R1	REVISED AS PER COMMENTS	MSP	SMJ	PSK	19.11.24
R-0	TENDER DRAWING	MSP	SMJ	PSK	12.11.24
REV	PARTICULARS OF REVISION	DRN	BYCHKD	BYAPRD	BY DATE

**REVISIONS IN DRAWINGS**

ARCHITECT :-  
MITIMITRA ARCHITECT AND ASSOCIATES

PMC :-

CLIENT :-

PROJECT :-  
CLOCK TOWER, LHO, SBI, KHARADI, PUNE

TITLE :-  
LIGHTING LAYOUT-FIRST FLOOR

SCALE	DATE	DRG NO.	REV.
1:100	12.11.24	1658-EL-LTG -01	R-0

RELEASED FOR  PRELIMINARY  TENDER  INFORMATION  APPROVAL  CONSTRUCTION

**VISION** ELECTRO - MECHANICAL CONSULTANTS PVT. LTD.  
 2 SHIVETTA 98/28 BHUSARI COLONY PUNE 411038. Tel: 25285686 Telefax: 25285685, email: office@nmdce.com

THIS DRAWING AND THE CONNECTED DESIGN IS OUR SOLE PROPERTY. IT IS LOANED ON CONDITION OF RETURN ON DEMAND. IT SHALL NOT BE COPIED, LENT OR USED WITHOUT OUR PRIOR WRITTEN CONSENT.